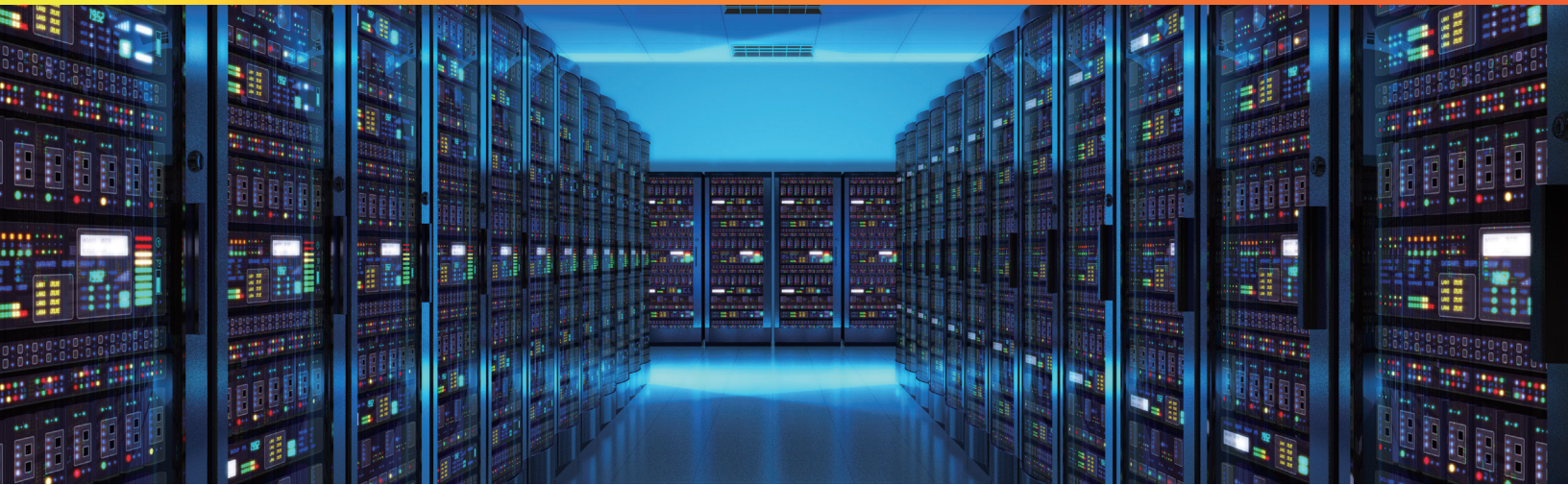




VERTIV™ VE RACK





Global Leading Rack Brand - KNÜRR®

- Established in 1931, Knürr has more than 80 years' experience in rack design and manufacturing.
- Headquartered in Munich, Germany, Knürr operates in 32 countries and regions and runs seven factories.
- In February 2006, Knürr was acquired by Vertiv, the global leader in designing, building and servicing critical infrastructure.
- Thanks to the flexible modular design, Knürr 's products are the first choice in the electronic and IT industry.
- As a technical leader in the world, Knürr owns more than 400 patents. Knürr ensures stability and reliability for electronic and IT equipment.

VE Rack

Vertiv is committed to solving the problems faced by today's data center managers and providing next-generation rack solutions and products that meet the needs of data center development. The VE rack is available in 1,100/1,200mm deep, 600/800mm wide, and 2,000/2,200mm high. The racks are perfectly compatible with the SmartAisle MDC (Module Datacenter) solution and adapt to the power supply, distribution, and cooling units of the adjacent modules. They are the best embodiment of the 1-DNA design concept, based on which the entire product lineup of Vertiv has been developed. Since its introduction, the VE rack has been successfully used in various types of equipment rooms in telecommunications, finance, government, education, and enterprises, and is highly appreciated by customers for high availability and excellent quality.

Highlights of Latest VE Rack

- A large variety of accessories
- Unique flexibility
- Integrated welding structure with high intensity
- Various dimensions specifications

High-quality rack design

- High perforation of 75%
- Seismic grade of 8 and 9
- Support over 1600 kg Static Bent
- Sheet metal Enclosed door frame for maximum rigidity

Outstanding flexibility

- Ease to modification of bottom entry
- Perfectly compatible with the SmartAisle solution

Perfect details

- Reliable wire grounding
- Lockable side panel ensures safety
- Welded frame increases the intensity of the rack
- Easy external baying without need to remove doors

Excellent compatibility

- EIA-310 Compliant
- Provide reliability to SmartAisle solution

High-quality rack design

The VE rack has undergone rigorous testing and certification, including: high and low temperature storage, random vibration, drop, anti-dumping, IP rating and other test certification, and completed static load, seismic, door opening angle, powder coating thickness, perforation rate rate and other test certification by China Telecommunication Technology Labs.

- Anti-dumping test standard: ASTM D6179-2007
- IP rating test standard: GB4208-2017; IEC60529:2013
- Drop test standard: GB/T2423.8-1995; IEC60068-2-31:2008
- Random vibration test standard: GB/T2423.56-2006; IEC60068-2-64:2008
- High and low temperature storage test standards: GB/T2423.56-2006; IEC60068-2-64:2008

1-DNA Integration



1-DNA design



Perfectly compatible with the SmartAisle solution

Rack PDU (rPDU)

Highlights of Vertiv rPDU

- Color: RAL7021 black
- Reliable internal wire connection
- High mechanical intensity and rigidity
- Large capacity: supports the largest current over 3*32A

Basic rPDU

- Modular design, outstanding stability and reliability
- Power distribution for equipment on multiple racks
- Multiple input/output standards to meet different needs of data centers

Monitored rPDU

- User-defined alarm threshold
- Back-end communication cascade
- When the measured value exceeds the alarm threshold, or a system failure occurs, it will trigger alarm automatically.
- Remote monitoring rPDU's volts, current, power load and other information. Equipped with a RS485 communication interface, it can be directly connected to the upper monitoring system to achieve the power usage management of the data center.

Switched rPDU

- With all the functions of a monitored rPDU
- When connected to the upper monitoring system, it can provide a comprehensive view of power usage in a data center.
- The remote outlet-level control can realize power supply on/off function.



Geist PDU



Basic rPDU



Monitored rPDU



Switched rPDU

Rack system accessories

Cable management unit

- Prevent blocking equipment access and maintain airflow path
- Mount PDUs and organize cables

Bottom and side panels

- Optimize the air flow and improve the cooling efficiency.

Cable tray

- Provide management of cables across rack rows, and facilitate management and troubleshooting.

Blanking panel

- Optimize the air flow and minimize bypass air
- Close unused U space for aesthetic

Shelves and support brackets

- Provide additional support for 19" rack mount equipment
- Be used for non 19" rack mount equipment, such as tower servers and displays.



Horizontal cable manager



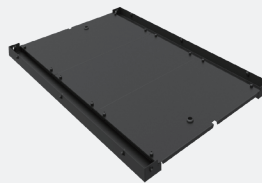
Adjustable Cable Organizer/Side Channel



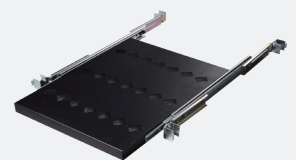
Blanking panel



L-type equipment support rail



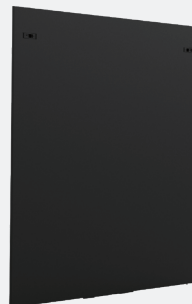
Bottom panel



Sliding shelf



PDU mounting/cable management bracket



Side panel



[Vertiv.com/en-in](https://www.vertiv.com/en-in) | E-mail : marketing.india@vertiv.com | Toll free : 1-800-2096070

Vertiv Energy Private Limited | Plot C-20, Rd No.19, Wagle Ind Estate, Thane (W), 400604. India

© 2019 Vertiv Co. All rights reserved. Vertiv, and the Vertiv logo trademarks or registered trademarks of Vertiv Co. All other names and logos referred to are trade names, trademarks or registered trademarks of their respective owners. While every precaution has been taken to ensure accuracy and completeness herein, Vertiv Co. assumes no responsibility, and disclaims all liability, for damages resulting from use of this information or for any errors or omissions. Specifications are subject to change without notice.