

Liebert® 10kW CRV Row-Based Cooling

Intelligent, Integrated Infrastructure for the Data Center



Benefits

Flexibility

- Ability to turn down to as low as 2 kW.
- Automatically balances the airflow and cooling capacity independently based on the needs of the IT equipment.
- Horizontal airflow cooling design is suitable for non-raised or raised floors.
- Adjustable supply air baffles maximize cooling to rack equipment by avoiding the need to provide extra air that is lost to the room.
- Caster mounted for easy placement.
- Top and bottom piping connections to satisfy varying site requirements.

Availability

- Alerts users in advance of potential issues via iCOM™ 7" touchscreen display or remote monitoring over BACnet, Modbus, or SNMP protocols.
- Temperature monitoring of up to 10 sensors to mitigate hot spots.
- Equipped with dual power supply for highest cooling availability even during power outages.

Save space and optimize cooling efficiency in all your edge applications, server rooms, and small data centers with the newest addition to the Liebert® CRV family. It installs within a row of data center equipment racks, providing precision cooling close to the server heat source for the most efficient and effective operation.

Lowest Total Cost of Ownership

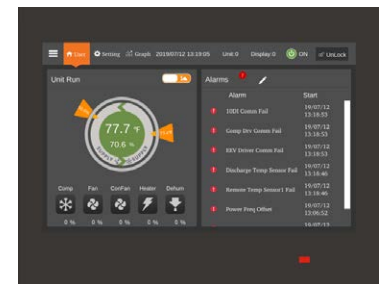
- Compact cabinet with high cooling capacity minimizes floor space requirements.
- Maximized energy efficiency by only providing as much cooling as needed through load matching components
- Easy to install and maintain — only front and back access required.
- Inverter driven compressor and variable speed EC fans operate efficiently and provide a long service life.

Ideally Suited For:

- Rows of racks in hot aisle/cold aisle configuration, in open or closed architecture.
- Rack equipment with high heat density, or a mix of densities.
- Spot cooling.
- Supporting capacity of existing raised floor cooling units.



Rack sensors ensure the correct amount of cold air is provided to eliminate hot spots



Liebert® iCOM™ controls allow multiple cooling units to communicate with each other, allowing them to work together as a team to enhance their performance



Technical Data Table

| Model | CRD100 | CRD101 | CRD102 |
|-------------------------------|---|---|--|
| SKUs | CRD100-0D00A | CRD101-0D00A | CRD102-1D00A |
| Region | Americas | Americas | Europe, Middle East and Africa |
| Net Sensible Cooling Capacity | 10kW | 10kW | 10kW |
| Capacity Modulation | 20-100% | 20-100% | 20-100% |
| Airflow | 1883 SCFM | 1883 SCFM | 3200 m3/h |
| Input Voltage | 208-230V/1Ph/60Hz | 208-230V/3Ph/60Hz | 230V/1Ph/50-60Hz |
| Refrigerant | R410A | R410A | R410A |
| Compressor | Inverter driven compressor, variable capacity 20-100% | | |
| Fans | Hot swappable, variable speed EC fans | | |
| Options | Condensate Pump Dual Power Supply Air Discharge Baffles | Condensate Pump Dual Power Supply Air Discharge Baffles | Condensate Pump Dual Power Supply Air Discharge Baffles Electric Reheat |
| Filtration | Merv8/G4 | Merv8/G4 | Merv8/G4 |
| Approvals | UL | UL | CE |
| Dimensions (H x D x W) mm | 2000/2267** x 1132/1232** x 300 | | |
| Dimensions (H x D x W) in | 78.7/86.6** x 44.6/48.5** x 11.8 | | |
| Weight | 231kg / 509 lbs | 231kg / 509 lbs | 231kg / 509 lbs |

* Return air 29.4°C (85°F), 32% RH & 35°C (95°F) Outdoor temperature

** with optional frame extensions

Controls and Communications

| | |
|----------------|--|
| Controls | Liebert® iCOM™ control with 7" color touch screen display and up to 10 remote sensors per unit |
| Communications | HTTP and SNMP, RS-485 Modbus, Modbus IP/BACnet IP |

Condenser matchup table

| Up to 45°C (113F) Ambient temperature | CCD100S-00A | CCD100S-00A | CCD101S-00A |
|--|--------------------------------------|-------------|-------------|
| Dimensions (W x D x H) without legs | 1300x450x745mm / 51.2x17.7x29.3 inch | | |
| Condenser Leg Height | 454mm / 17.9inch | | |
| Weight | 56kg / 123lbs | | |

Vertiv.com | Vertiv Headquarters, 1050 Dearborn Drive, Columbus, OH, 43085, USA

© 2020 Vertiv Group Corp. All rights reserved. Vertiv™ and the Vertiv logo are trademarks or registered trademarks of Vertiv Group Corp. All other names and logos referred to are trade names, trademarks or registered trademarks of their respective owners. While every precaution has been taken to ensure accuracy and completeness here, Vertiv Group Corp. assumes no responsibility, and disclaims all liability, for damages resulting from use of this information or for any errors or omissions. Specifications, rebates and other promotional offers are subject to change at Vertiv's sole discretion upon notice.