

Minimizing Facility Risk During Critical Times

In situations such as this, mission critical facilities face particular challenges because key personnel are unavailable due to illness or quarantine or there are other long-term impacts affecting the operator's ability to maintain IT system availability. This infographic helps operators of critical infrastructure facilities prepare for these types of circumstances.

PROTECT SITE AND STAFF



Increase sanitization

Critical facilities present challenges, because of access/security, the need for specialized procedures and the need to protect equipment.

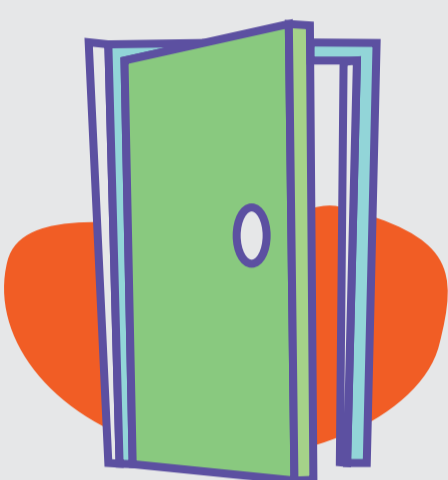
Intensify housekeeping measures.

Place hand sanitizer and disinfectant wipes (with disposal units) throughout the facility.

Place signs in bathrooms reminding staff to wash hands often, using proper techniques.

Research and adopt methods of deep cleaning a white space environment, considering the specifics of your facility (e.g., air exchange rate/volume, raised floors).

Consider replacing filters more frequently and/or using filters with higher minimum efficiency reporting value rating.



Limit access

Entry to the site is allowed only if visitor is qualified.

Work in consultation with your organization's Human Resources (HR) and/or Environmental Health and Safety department(s) to develop a screening questionnaire regarding exposure to high-risk situations.

Manage shifts

Create teams of mission-critical staff, ensuring each team has a mix of skills.

Allow no cross-contact of teams, even outside the work environment.

Depending on the appropriate medical or management advice, training pairs (e.g., senior engineer and trainee) must always wear masks.

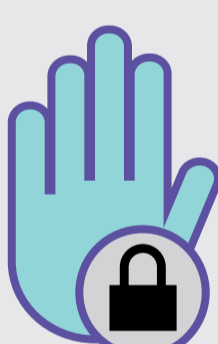
Shift leaders should report regularly (via email) to managers on staff compliance with mitigation efforts (cleaning, social distancing, etc.) and notify of any concerns (e.g., worker issues, shortage of disinfecting supplies, etc.)



Data centers in severely affected areas or those affected by curve flattening efforts

Many of the actions described in this document are a matter of company policy, but facilities operating in severely affected areas may be subject to external government rules, especially regarding meetings and travel. In addition, in these areas, it is wise to adopt the strictest policies practical.

Enhance Access Restrictions



Consider prescreening all scheduled visitors before they arrive on-site



Send the visitor the questionnaire via email 48 hours prior to their visit (or as long as possible) and require completion before the appointment is confirmed

Further secure the workforce:



Consider designating at least one self-quarantined individual per position per shift to be on call for emergencies



Given that the incubation period for the virus is believed to be two weeks, consider bi-weekly rotations for teams working shifts: Team A works for two weeks in a distinct area with no crossover with any other teams. Then the next two weeks period, Team B takes over and Team A self-quarantines for 14 days. (Self-quarantine should involve minimum social contact outside immediate family and common sense health steps to minimize risk of contracting the virus, including avoiding public places and public transport.)



Prepare for staff housing on-site, but use only as a last resort, as doing this may actually spread the virus more rapidly.

Learn about our critical facility management and how we can assist you: [Vertiv.com/CFM](https://www.vertiv.com/cfm)